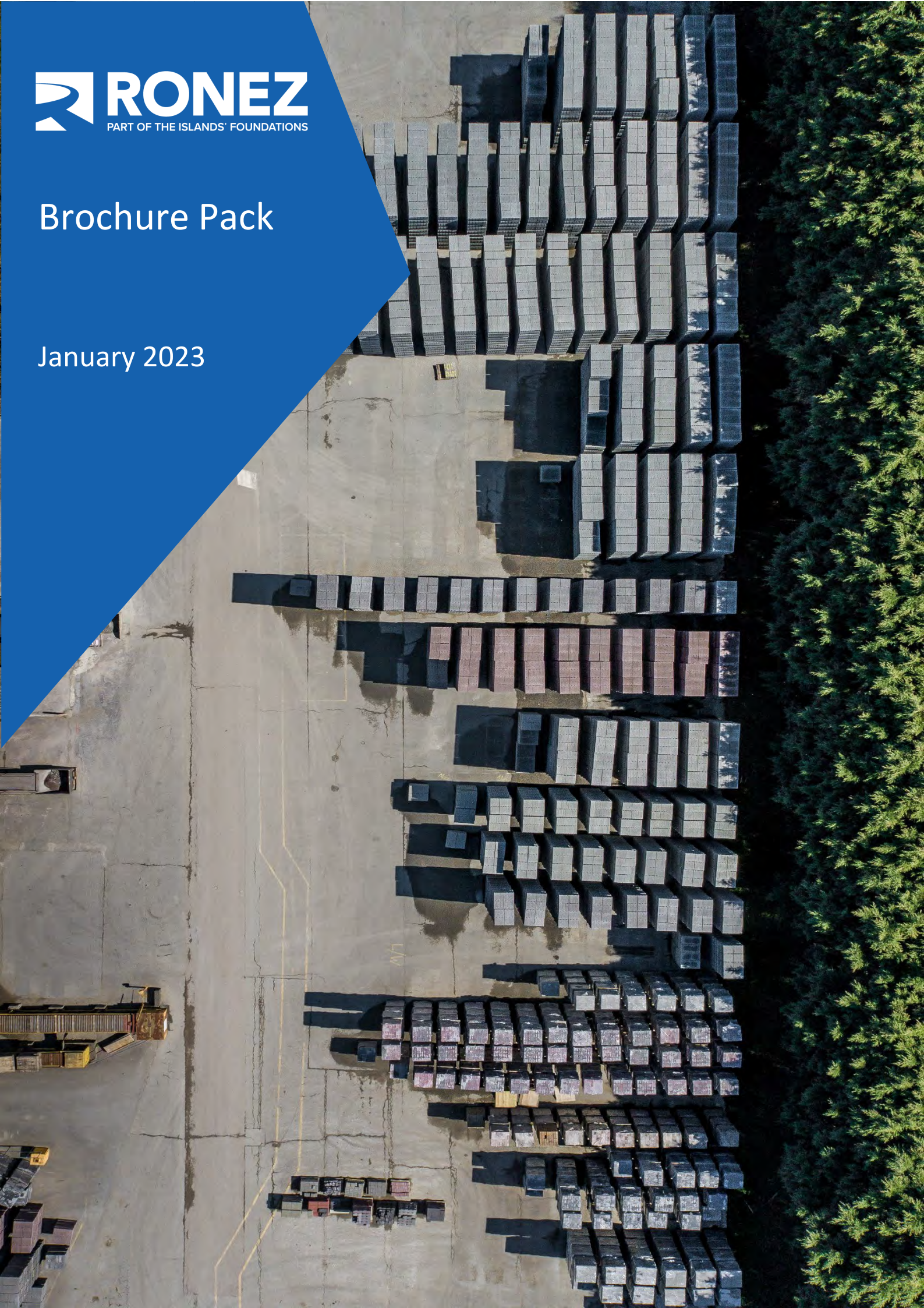




# Brochure Pack

January 2023





# Introduction

The Ronez operations supply the Channel Islands with aggregates, ready-mixed concrete, asphalt and precast concrete products. Operating out of St John's Quarry in Jersey and Les Vardes Quarry and Vale Castle in Guernsey, we offer a full range of high-quality construction materials.

Quarrying activity on our sites can be traced back to 1869 serving the island's needs for quarried stone. We have grown and developed and now produce precast materials, ready-mixed concrete, asphalt and undertake contracting services.

## Aggregates

Crushed rock aggregates produced at the Ronez quarries are supplied direct to the local construction industry, as well as forming the basis for an extensive range of construction products including ready mixed concrete, asphalt and concrete products.

## Ready-Mixed Concrete

Our ready-mixed concrete plants in Jersey and Guernsey supply a range of products from floor screeds to designed mixes for structural applications.

## Asphalt

We are able to provide a wide range of asphalt products from base course to specially designed mixes in accordance with the British / European standards.

## Road Surfacing

The road contracts department in Guernsey and Pallot Tarmac Ltd in Jersey, serve the surfacing, trench reinstatement and contracting needs of the Islands roads and infrastructures.

## Precast Concrete Products

We manufacture a range of dense, lightweight and high strength concrete blocks along with precast kerbs, edgings and paving products.

## Cementitious Products

We are the principal importer of cementitious products into the Channel Islands, using our own bulk tanker, the MV Ronez. The powder is transferred through our silo terminals that you see at the Ports in Jersey and Guernsey.

## SigmaRoc brands from Ronez

Allen Concrete, Poundfield Products Ltd, G D Harries and Sons Ltd, Johnston Quarry Group, CCP Building Products Ltd, RightCast, Foelbach Quarry, Benelux, Nordkalk and Carrieres Du Hainaut.

# Beam and Block Product Information



## A high strength, robust, medium density and load bearing block for use in beam and block applications.

Beam and Block is a construction method to support flooring, especially for ground floors as well as multi storey buildings. It is made of cast concrete, one piece of which is a prestressed concrete Beam which can be inverted T-shape beam, or lintel, the other piece being a simple rectangular block, manufactured by Ronez. The blocks are placed at regular intervals and the beams placed between them to form a connection between each block section.

## Advantages of Beam and Block

### Rigid construction

A block and beam floor eliminates the bounce associated with timber floors. Shrinkage is minimal and block and beam floors do not creak in use.

### Sound

Noise within homes is a source of frustration to home owners. Block and beam concrete floors, used for years in the construction of flats, are now widely used in housing to produce quieter homes.

### Rapid installation

As the block and beam floor is delivered to site ready for use, only simple installation techniques are needed, floors are quickly installed.

### Safe working platform

As soon as the flooring is installed, the floor can safely be used as a working platform, allowing the inner leaf construction work to commence.

# Beam and Block Product Information

- Available in solid format with a standard strength of 7.3N/mm<sup>2</sup>
- 10.4 Nmm<sup>2</sup> block are available subject to order
- For use internally and externally, both above and below dpc (7.3N/mm<sup>2</sup>)

## Beam Blocks product range

Size (mm)	440 x 215
Thickness (mm)	100
Density (kg/m <sup>3</sup> )	2070
Weight (kg)	19.60
Strength	7.3 - 10.4N/mm <sup>2</sup>
Colour	Natural
Finish	Standard
Thermal conductivity (W/mk)	Internal 1.07 External 1.17

### Ronez Limited

Les Vardes Quarry, St Sampson  
Guernsey GY2 4TF  
Tel: +44 (0)1481 256426

sales@ronez.com  
www.ronez.com

### Ronez Limited

Momains Yard, Vale  
Guernsey GY2 5TZ  
Sales: +44 (0)1481 201300  
Technical: +44 (0)1481 201312

### Ronez Limited

La Route du Nord, St John  
Jersey JE3 4AR  
Tel: +44 (0)1534 867212  
Technical: +44 (0)1534 867214



The information contained within this publication was accurate at time of production. However, Ronez Limited reserves the right to introduce modifications or changes to detail at any time without notice. No charge is levied for this publication or advice therein, and accordingly the company, its employees and authorised agents can accept no liability whatsoever, either indirectly or directly arising from the use of its products in connection with any information or advice contained in this guide.

A SigmaRoc PLC Company.



# Block paving Product Information



A tough, hard-wearing block capable of handling heavy-use trafficking but with the size and colour range to meet most visual design criteria.

- Offers a high level of durability and good grip
- Can be easily lifted to access services
- Wide range of shades including three mixed colours for aesthetic appeal

## Applications

Ronez block paving is suitable for all pedestrianised and parking areas, shopping precincts, HGV loading areas, docks and container loading bays and access roads as well as farm and stable areas. Refer to our technical department for further guidance on suitability for given applications.

## Manufacturing standard

Ronez block paving is manufactured using a semi-dry process and compliant to European Standard BS EN 1338.

## Performance

**Strength:** The strength requirements are met to the manufacturing standard.

**Slip and skid resistance:** The potential for slip is 'low' in accordance with manufacturing standard.

## Complementary products

Multi Edged Paver. (MEP)

## Colour swatches



1. Autumn
2. Brindle
3. Burnt Oker

4. Grey
5. Charcoal

# Block paving

## Product Information

### Ronez block paving

Size (mm)	200x100	200x100	200x100
Thickness (mm)	80	65	55
Weight (kg)	3.7	3.0	2.4
Units/m <sup>2</sup> (approx)	50.0	50.0	50.0
No. per pack	308	384	448
M <sup>2</sup> /pack	6.16	7.68	8.96
Pack weight (T)	1.13	1.11	1.08
Colour available	Gy, Ch, BO, Br, Au	Gy, Ch, BO, Br, Au	Gy, Ch, BO, Br, Au
Chamfered	Yes	Yes	Yes

Gy - Grey / Ch - Charcoal / BO - Burnt Oker /  
Br - Brindle / Au - Autumn

Available as a permeable paver in 80mm (Gy, Br, Ch, Au, BO).

### Installation standard

Install in accordance with the relevant section of BS 7533.

### Maintenance and cleaning

Ronez can supply, on request, advice on specific stain removal and general maintenance, suitable cleaning products and referrals to specialist cleaning companies.

### Efflorescence in Concrete Products

Efflorescence is a natural chemical reaction between cement and water. It causes calcium hydroxide (lime) deposits to migrate through the damp concrete and then reacts with carbon dioxide in the atmosphere resulting in white patches of calcium carbonate crystals appearing on the paved surface.

The occurrence of efflorescence is unpredictable but can be more prevalent in winter when concrete becomes wet and is slower to dry. Although there are cleaning products available, efflorescence patches will generally disappear with natural weathering over the passage of time.

Ronez Limited cannot accept responsibility for the effect of efflorescence which can be a characteristic of all good quality products with a high cement content.

#### Ronez Limited

Les Vardes Quarry, St Sampson  
Guernsey GY2 4TF  
Tel: +44 (0)1481 256426

sales@ronez.com  
www.ronez.com

#### Ronez Limited

Momains Yard, Vale  
Guernsey GY2 5TZ  
Sales: +44 (0)1481 201300  
Technical: +44 (0)1481 201312

#### Ronez Limited

La Route du Nord, St John  
Jersey JE3 4AR  
Tel: +44 (0)1534 867212  
Technical: +44 (0)1534 867214

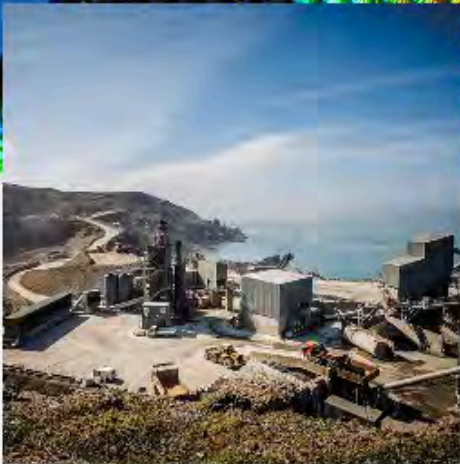


The information contained within this publication was accurate at time of production. However, Ronez Limited reserves the right to introduce modifications or changes to detail at any time without notice. No charge is levied for this publication or advice therein, and accordingly the company, its employees and authorised agents can accept no liability whatsoever, either indirectly or directly arising from the use of its products in connection with any information or advice contained in this guide.

A SigmaRoc PLC Company.



**Ronez  
Discovery  
Coloured  
Ready Mixed  
Concrete**



# Colours to catch the eye

Introducing the new Ronez Discovery an eye-catching coloured ready mixed concrete to provide your construction project with a bold new look that combines aesthetic appeal with the long lasting durability of traditional paving or structural concrete.

**For more information call Paul Pinel  
on 01534 867212 or 07829 925625  
or email [paul.pinel@ronez.com](mailto:paul.pinel@ronez.com)**



# Ronez Discovery Coloured Ready Mixed Concrete

Ronez Discovery greatly enhances the architectural and visual appeal of concrete, affording the client a much greater range of design opportunities.

The distinctive colour is achieved by combining cement, coarse aggregates, sand and a coloured pigment, while the batching plant uses specific dedicated mix designs and materials to ensure a consistent colour is attained. Ronez Discovery can also be used with water resistant and fibre reinforced mixes

A robust and hardwearing solution that offers a permanent colour, Ronez Discovery can be supplied to comply with any specification or grade, and combines all the inherent flexibility of insitu concrete with a highly attractive and decorative finish.



Consistent colouring throughout ensures that visual appeal can be maintained even in the event of surface damage. It even offers a multitude of surface finishes, from power float to sponge texturing, for an array of striking visual effects.

Ronez Discovery offers a cost effective solution to painted floors and an alternative to decorative surface coatings reducing construction cost and build time programme.

## **RONEZ DISCOVERY CAN BE USED TO CREATE IMPACT AND DESIGN FEATURES IN A MULTITUDE OF DIFFERENT APPLICATIONS INCLUDING:**

- industrial, commercial and domestic flooring
- roads
- fair-faced concrete walls
- pedestrian walkways
- communal areas
- public buildings
- footpaths and cycle tracks
- parking areas and driveways

**For more information and technical specification details please call Paul Pinel on 01534 867212 or 07829 925625 or email [paul.pinel@ronez.com](mailto:paul.pinel@ronez.com)**



# Farmcrete Product Information



A ready-mixed concrete specially designed to meet the tough and aggressive requirements of agricultural applications, whilst being economical and easy to place.

#### Farmcrete when correctly specified and placed:

- Is economical and easy to use
- Has high workability
- Is adaptable to all finish types for agricultural requirements
- Is durable with longer working life in aggressive conditions
- Is manufactured from responsibly sourced materials
- Can be used with reinforcement
- Aids compliance with QA schemes and welfare of livestock regulations

**Additional benefits will be seen with the addition of polypropylene fibres which will enhance the mix by:**

- Providing longer lasting concrete
- Offering greater resistance to impact and abrasion wear
- Minimising plastic cracking

#### Applications

Livestock housing, cattle sheds, silage pits, farm yards, retaining walls and grain stores.

#### Manufacturing standard

Batching in accordance with BSI accreditation.

Farmcrete conforms to the requirements of European Standard BS EN 206 performance, production and conformity and with the requirements of BS8500-1 and BS 8500-2 2006.

Ronez Farmcrete is manufactured under an independently monitored third party quality assurance scheme in accordance with ISO 9001, and with factory environmental compliance to ISO 14001.



# Farmcrete Product Information

## Groundwork preparation

To ensure that your concrete doesn't dry out too quickly, we advise that the product is placed on a well compacted sub-base layer, which has in turn been covered with a layer of plastic sheeting. Remove top soil to the required level and ensure that your base is at least 75mm larger than the finished slab.

## Curing

Excessive moisture loss will attribute to unwanted dry shrinkage cracking - so Farmcrete must not be allowed to dry out too quickly. We highly recommended that you make provisions to cover your concrete with plastic sheeting once it is has been laid. As a guide, curing should continue for seven days in the summer and ten days in winter. If required, we are able to offer a modified Farmcrete product which can reduce this time span.

We advise that you do not to place concrete during freezing conditions. If it is likely that overnight temperature may dip below 0°C, an air gap should be left between the layer of plastic sheeting and the top of the concrete surface.

## COSHH data

Please be aware that concrete is both abrasive and alkaline, so protective clothing, gloves, wellingtons, overalls and safety glasses should always be worn. Cement can burn your skin.

Full COSHH data on Ronez concrete products is available on request. Please call our technical department.

### Ronez Limited

Les Vardes Quarry, St Sampson  
Guernsey GY2 4TF  
Tel: +44 (0)1481 256426

sales@ronez.com  
www.ronez.com

### Ronez Limited

Momains Yard, Vale  
Guernsey GY2 5TZ  
Sales: +44 (0)1481 201300  
Technical: +44 (0)1481 201312

### Ronez Limited

La Route du Nord, St John  
Jersey JE3 4AR  
Tel: +44 (0)1534 867212  
Technical: +44 (0)1534 867214



The information contained within this publication was accurate at time of production. However, Ronez Limited reserves the right to introduce modifications or changes to detail at any time without notice. No charge is levied for this publication or advice therein, and accordingly the company, its employees and authorised agents can accept no liability whatsoever, either indirectly or directly arising from the use of its products in connection with any information or advice contained in this guide.

A SigmaRoc PLC Company.



# Ronez Flow Product Information



Ronez Flow is a range of highly specialised self compacting concrete formulations, each presenting significant advantages over the equivalent traditional concrete.

Designed to provide a highly fluid consistency and minimal energy consumption in use. Ronez Flow is based on carefully selected and controlled binders and admixtures in conjunction with aggregates selected in accordance with the proposed end use.

Ronez Flow offers contractors and specifiers a high performance, secure fast track solution to many of the more challenging aspects of construction.

## Ronez Flow when correctly specified and placed will deliver:

- High quality finishes - Ronez Flow is capable of delivering the finest surface finish and detail in areas of difficult access, complex formwork or very heavily reinforced sections. The mix design concept applied to products in this range ensures each product is robust under all normal site conditions
- Reduced or eliminated remedial work
- Reduced labour requirements - labour friendly concrete, the simplicity of placing together with the elimination of compaction and in many instances only very minor finishing effort will ensure a project achieves savings in terms of time and cost
- Ronez Flow is easier to place and finish than conventional concrete, and is available in standard strengths up to 40 N/mm<sup>2</sup>. Higher grades are possible.
- Improved output in precast environments
- Reduced impact on the environment - noise impact of the construction operation is greatly reduced, concrete pumps run more quietly and the need for all forms of vibration is eliminated. The use of power floating is eliminated



# Ronez Flow

## Product Information

- Reduces placing and finishing time - the enhanced rate of placing that can be achieved using Ronez Flow allows the scheduling of larger pours or a reduction in working hours required. The elimination of late working or overtime costs can significantly benefit the environment through these actions
- The potential to eliminate late working and finishing is a significant reduction in the environmental impact of construction
- Ronez Flow preparation allows the contractor to 'place and finish' concrete without the normal delay between placing and finishing operations.
- When used as a screed, can offer superior performance over traditional sand cement and flowing screed mixes
- Elimination of "vibration white finger" risk
- Ronez Flow can be tailored to the particular challenges of your contract
- Ronez Flow is compatible with flowing screed when used in association with underfloor heating systems

### Applications

Ronez Flow may be utilised in all forms of construction in residential, transport infrastructure, office and administrative buildings as well as military engineering, hotels, schools and hospitals repair and refurbishment.

### Manufacturing standard

Ronez Flow conforms to the requirements of European standard BS EN 206-1 and with the requirements of BS8500-1 and BS 8500-2 2006.

As with all Aggregate Industries' products Ronez Flow is manufactured under an independently monitored third party quality assurance scheme in accordance with ISO 9001, and with factory environmental compliance to ISO 14001.

### Installation standard

The Ronez Flow range may be placed by any conventional method. Achieving the optimum finished surfaces may require discussion with our technical services department before construction begins. Successful placing has been achieved using pump, conventional skip and direct placement methods.

### Curing

As with any concrete to achieve the desired properties it is essential to ensure correct and adequate curing.

Self compacting concrete has a high fines content and has a low tendency to bleed; this characteristic means the initial curing operations should begin as soon as practicable after finishing the surface to minimise the risk of premature drying and plastic shrinkage cracks. For larger pours the curing process must run consecutively to the finishing operation. The use of a correctly applied 90% efficiency curing membrane has been shown to be adequate. Curing should continue for a minimum of 7 days



# Floor screeds

## Product Information



A floor screed is a cementitious material made from a 1:3 or 1:4.5 ratio of cement to sharp sand. It may be applied onto either a solid in-situ concrete ground floor slab or onto a precast concrete floor unit. There are many proprietary screeds on the market and further information about these can be obtained from Ronez.

### Application

The screed may be directly bonded to the base, or laid unbonded onto a suitable damp proof membrane which is placed over the slab. Alternatively it may be applied as a floating finish over a layer of rigid insulation material. This application is suitable for use with cast-in water pipes to provide underfloor heating.

If reinforcement is required, this can either be in the form of a fine metal mesh, fibres which are normally polypropylene or a fine glass mesh. Ronez supply such fibres for this purpose.

The screed may be left as finished, or floated to produce a smooth surface on which to lay a specified flooring or finish.

Ready-mixed sand and cement screeds that are mixed and then delivered to site offer additional quality assurance over site mixed screeds and a more consistent material.

### Traditional cement sand screeds

A bonded screed is bonded to the slab or substrate below, and the main way that bonded screeds fail is that the bond between the screed and the substrate fails. This is more likely to happen if the screed is too thick. An unbonded screed is separated from the slab or substrate below, and the main way that an unbonded screed fails is to lift or curl. This is more likely to happen if the screed is too thin. Bonded screeds should therefore be thin, normally 50mm. Unbonded screeds should be thick, normally 70mm or more to help prevent curling. The use of heaters with unbonded screeds can also increase the likelihood of curling, due to differential shrinkage from the top of the screed drying faster than the bottom.



# Floor screeds

## Product Information



### Screed definitions

BS8204 and BS EN 13318:

- **Levelling screed** – screed suitably finished to obtain a defined level and to receive the final flooring. It does not contribute to the structural performance of the floor.
- **Wearing screed** – screed that serves as flooring. This term was formerly known as high strength concrete topping. It is also used to refer to structural toppings as well as wearing surfaces.
- **Bonded** – screed laid onto a mechanically prepared substrate with the intention of maximising potential bond.
- **Unbonded** – screed intentionally separated from the substrate by the use of a membrane.
- **Floating** – screed laid on acoustic or thermal insulation. This is a type of unbonded screed.
- **Cement sand screed** – screed consisting of a screed material containing sand up to a 4mm maximum aggregate size.
- **Fine concrete screed** - screed consisting of a concrete in which the maximum aggregate size is 10mm.
- **Pumpable self-smoothing screed** - screed that is mixed to a fluid consistency, that can be transported by pump to the area where it is to be laid and which will flow sufficiently (with or without some agitation of the wet material) to give the required accuracy of level and surface regularity.
- **Curling** – an upward deformation of the edges of the screed caused by differential shrinkage

It should be noted that pumpable self-smoothing screeds are often known as 'self-levelling' screeds.

### Cement sand screeds

These are traditional screeds and are suitable for all applications, provided they are specified correctly. The biggest drawback is the drying time; BS 8203 estimates the drying time for a sand cement screed as one day for each millimetre of screed thickness up to 50mm thick. Further guidance on drying times can be found in the code. Ronez can supply quick drying screed that will improve this drying time to 3mm per day. These screeds can also be retarded and have fibres added if they are to be laid to the same guidance offered here.

### Screed Workability

The easiest way to check the workability of the screed is using the 'snowball test' by squeezing a handful of screed mix with a gloved hand. The right workability is when the screed forms a moist ball on releasing the hold, and does not crumble (too dry) or drip water (too wet). This test can be conducted throughout the installation process. Screeds that are showing signs of crumbling during this test should not be laid as this will result in poor compaction and the screed will not perform as it should. Traditional sand and cement screed of a 4:1 ratio supplied by Ronez has a maximum work time of 2 hours from the time of batch. This time can be reduced by high ambient temperatures so can be difficult to predict. Constantly checking the screed using the test above is the recommended way to ensure your screed is at optimum moisture. Adding water to a screed that is showing signs of drying out is not recommended as the screed will have already begun its hydration process. Ronez can supply screeds that will increase this work time and these can enable work times of up to 4 hours from batching, but again high ambient temperatures can reduce this.



# Floor screeds

## Product Information



### The Right Process for Installing the Screed

It is important to carry out the process of screed installation in a systematic manner to achieve the best results. There are several steps to be followed while preparing to install the screed:

- Check the specification is fit for purpose
- Screed should be placed on non absorptive material during transport and delivery to site. It should remain under cover during the installation process.
- Make sure the substrate is ready to receive the screed.
- Check the access and egress is suitable for screed installation, plant and materials.
- Check the building is watertight.
- Check the datum levels, record the measurement down to finished screed level to ensure minimum and maximum depths are achievable and compliant with tendered nominal allowance.
- Apply the screed in a sequential manner, avoiding dry joints.
- Apply trowel cuts where necessary for crack control.

### The Right Screeding Protection Measures

Appropriate screed protection measures right after screed installation until the laying of the final floor finish is an extremely important step in preventing screeding failures, and is of utmost importance in achieving a screed of high quality, finish and durability. From the regulation of site traffic to covering the screeded surface with screed protectors, there are several measures to be considered for protecting the screed. At a basic level, it is imperative to ensure that:

- No site traffic, including pedestrians, is allowed at least for 48 hours after the installation of the screed
- Heavy site traffic is regulated until the installation of the final finish
- Heavy weights are not loaded unless after the consultation with a structural engineer

### Further reading

# Floor screeds

## Product Information

British Standards Institution, BS 8204: Screeds, bases and insitu floorings

- Part 1: Concrete bases and cement sand levelling screeds to receive floorings
- Code of practice. BSI, 2003.

British Standards Institution, BS 8204: Screeds, bases and insitu floorings

- Part 2: Concrete wearing surfaces
- Code of practice, BSI, 2003

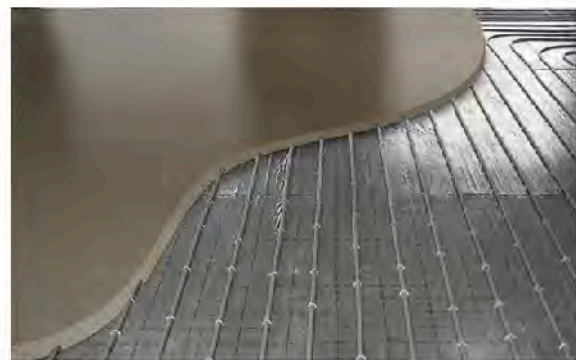
British Standards Institution, BS 8204: Screeds, bases and insitu floorings

- Part 7: Pumpable self-smoothing screeds
- Code of practice, BSI, 2003

British Standards Institution, BS 8203: Code of practice for Installation of resilient floor coverings, BSI, 2001

Gatfield, M.J. Report 184: Screeds, floorings and finishes – selection, construction and maintenance, CIRIA, 1998

Mortar Industry Association Data Sheet 22: Screeds



### Ronez Limited

Les Vardes Quarry, St Sampson  
Guemsey GY2 4TF  
Tel: +44 (0)1481 256426

sales@ronez.com  
www.ronez.com

### Ronez Limited

Momains Yard, Vale  
Guemsey GY2 5TZ  
Sales: +44 (0)1481 201300  
Technical: +44 (0)1481 201312

### Ronez Limited

La Route du Nord, St John  
Jersey JE3 4AR  
Tel: +44 (0)1534 867212  
Technical: +44 (0)1534 867214



The information contained within this publication was accurate at time of production. However, Ronez Limited reserves the right to introduce modifications or changes to detail at any time without notice. No charge is levied for this publication or advice therein, and accordingly the company, its employees and authorised agents can accept no liability whatsoever, either indirectly or directly arising from the use of its products in connection with any information or advice contained in this guide.

A SigmaRoc PLC Company.



# Foundationcrete Product Information



A durable and versatile ready-mixed concrete specially designed for one storey domestic foundations with no steel reinforcements.

#### Foundationcrete when correctly specified and placed:

- Is economical and easy to use
- Has high workability
- Can meet aggressive ground conditions
- Is manufactured from responsibly sourced materials

### Applications

Domestic strip foundations without reinforcement, such as houses, domestic garages, conservatories, garden wall foundations, blinding and kerb backing.

### Manufacturing standard

Batching in accordance with BSI accreditation. Foundationcrete conforms to the requirements of European Standard BS EN 206 concrete Specification, performance, production and conformity and with the requirements of BS8500-1 and BS 8500-2.

Ronez Foundationcrete is manufactured under an independently monitored third party quality assurance scheme in accordance with ISO 9001, and with factory environmental compliance to ISO 14001.

### Groundwork preparation

To ensure that your concrete doesn't dry out too quickly, we advise that the product is placed on a well compacted sub-base layer, which has in turn been covered with a layer of plastic sheeting. Remove top soil to the required level and ensure that your base is at least 75mm larger than the finished slab.



# Foundationcrete Product Information

## Curing

Excessive moisture loss will attribute to unwanted dry shrinkage cracking, so Foundationcrete must not be allowed to dry out too quickly. We highly recommended that you make provisions to cover your concrete with plastic sheeting once it has been laid. As a guide, curing should continue for seven days in the summer and ten days in winter. If required, we are able to offer a modified Foundationcrete product which can reduce this time span. We advise that you do not place concrete during freezing conditions. If it is likely that overnight temperatures may dip below 0°C, an air gap should be left between the layer of plastic sheeting and the top of the concrete surface.

## COSHH data

Please be aware that concrete is both abrasive and alkaline, so protective clothing, gloves, wellingtons, overalls and safety glasses should always be worn. Cement can burn your skin. Full COSHH data on Ronez concrete products is available on request. Please call our technical department.

## Key aggregate and recycled content

This product may be formulated to be substantially better for the environment than the equivalent traditional concrete.

Wherever available, a recycled or secondary aggregate may be selected to achieve a reduced environmental impact.

The raw materials used in the manufacture of the binders are obtained from processes where they form from a co-product.

### Ronez Limited

Les Vardes Quarry, St Sampson  
Guernsey GY2 4TF  
Tel: +44 (0)1481 256426

sales@ronez.com  
www.ronez.com

### Ronez Limited

Momains Yard, Vale  
Guernsey GY2 5TZ  
Sales: +44 (0)1481 201300  
Technical: +44 (0)1481 201312

### Ronez Limited

La Route du Nord, St John  
Jersey JE3 4AR  
Tel: +44 (0)1534 867212  
Technical: +44 (0)1534 867214



The information contained within this publication was accurate at time of production. However, Ronez Limited reserves the right to introduce modifications or changes to detail at any time without notice. No charge is levied for this publication or advice therein, and accordingly the company, its employees and authorised agents can accept no liability whatsoever, either indirectly or directly arising from the use of its products in connection with any information or advice contained in this guide.

A SigmaRoc PLC Company.



# Hydrain

## Fast draining engineered concrete



Ronez Hydrain no fines concrete is an ideal solution for surface and stormwater management. A fast draining concrete pavement solution that rapidly directs stormwater off streets, parking surfaces, driveways and walkways. Minimises costs and long-term maintenance for local authorities to local Government Departments and developers of stormwater management. A range of strengths is available.

Designed with a sub-base to contain typically 15 - 35% voids, water flows freely through Ronez Hydrain at rates in excess of between 150 litres - 1000 litres per minute per square metre.

### Applications

- Residential roads
- Car parks and parking areas
- Leisure (e.g. tennis courts, swimming pool decks, cycleways)
- Driveways and alleyways
- Pavement edge drains and gutters
- Can be used as a structural underlayer



# Hydrain

## Fast draining engineered concrete

### Key benefits

- Stormwater management - high permeability and drainage capacity
- Environmental management - minimises urban impact on natural water cycle
- Reduces costs as part of a SuDS (Sustainable Drainage System)
- Available with Ronez Discovery to offer decorative and functional hard landscaping opportunities
- Mitigates surface pollutants
- No standing water, lessens risk of hydroplaning

### Characteristics

- Compressive strength ~4-15N/mm<sup>2</sup>
- Voidage from 15-35% depending on type and placing technique
- Unit weight is typically 70% of conventional concrete
- Workable up to 90 minutes



#### Ronez Limited

Les Vardes Quarry, St Sampson  
Guemsey GY2 4TF  
Tel: +44 (0)1481 256426

sales@ronez.com  
www.ronez.com

#### Ronez Limited

Momains Yard, Vale  
Guemsey GY2 5TZ  
Sales: +44 (0)1481 201300  
Technical: +44 (0)1481 201312

#### Ronez Limited

La Route du Nord, St John  
Jersey JE3 4AR  
Tel: +44 (0)1534 867212  
Technical: +44 (0)1534 867214



The information contained within this publication was accurate at time of production. However, Ronez Limited reserves the right to introduce modifications or changes to detail at any time without notice. No charge is levied for this publication or advice therein, and accordingly the company, its employees and authorised agents can accept no liability whatsoever, either indirectly or directly arising from the use of its products in connection with any information or advice contained in this guide.

A SigmaRoc PLC Company.



# ICF Crete Product Information



## Ronez have developed sustainable ready-mixed concrete mixes for Insulated Concrete Formwork (ICF) applications.

Widely used in the USA, Canada and Continental Europe, ICF is a relatively new UK building technique which involves a series of hollow expanded polystyrene blocks into which ICF Crete is poured. The system combines the inherent strength of concrete with the excellent thermal insulation properties of polystyrene to produce cost-effective and durable structures. In addition ICF systems provide some of the inherent benefits of concrete construction, namely, sound insulation, air tightness, fire resistance, long-term performance and robustness.

- ICF formwork with ICF Crete provides a sustainable walling element with green guide ratings of A+ and A dependent on walling thickness and internal and external finishes
- Enables quick build of watertight shells

- ICF systems are highly air tight which improves comfort and less heat loss compared with leaky walls thermally bridged
- Acoustic performance easily exceeds the requirements of building regulations offering peace and quiet in multi dwelling construction
- Structural integrity for better resistance to forces of nature compared with framed walls
- Reduces HVAC operating costs by 30% - 70%
- No vertical heat loss through ICF party walls
- ICF structures offer a more comfortable, quiet, and energy – efficient environment than those built with traditional construction methods
- Designing and building with ICF's can help your construction project attain Ecohomes excellent, and high levels in the Code For Sustainable homes
- Insulation Concrete Formwork creates a monolithic concrete wall that is many times stronger than timber framing

# ICF Crete

## Product Information

### COSHH data

Full COSHH data is available on request.

### Applications

Interior and exterior walls using an ICF system in residential commercial and institutional applications. ICF systems are eminently suitable for basement construction

### Finishes

The insulated structure may be clad internally and externally with a range of finishes, including plaster, plasterboard masonry, brick slips and renders.

### Manufacturing standard

ICF Crete conforms with the requirement of European standard BS EN 206-1 concrete Part 1: Specification, performance, production and conformity with the requirements of BS8500-1 and BS 8500-2.

ICF Crete is manufactured under independently monitored third party assurance schemes in accordance with ISO 9001 and with factory environmental compliance to ISO 14001.

### Performance

Walls up to 3m high can be poured usually by concrete pump into the empty core of the formwork.

It is good practice to fill the complete wall in lifts of approximately 1m and vibrate the concrete.

#### Ronez Limited

Les Vardes Quarry, St Sampson  
Guernsey GY2 4TF  
Tel: +44 (0)1481 256426

sales@ronez.com  
www.ronez.com

#### Ronez Limited

Momains Yard, Vale  
Guernsey GY2 5TZ  
Sales: +44 (0)1481 201300  
Technical: +44 (0)1481 201312

#### Ronez Limited

La Route du Nord, St John  
Jersey JE3 4AR  
Tel: +44 (0)1534 867212  
Technical: +44 (0)1534 867214

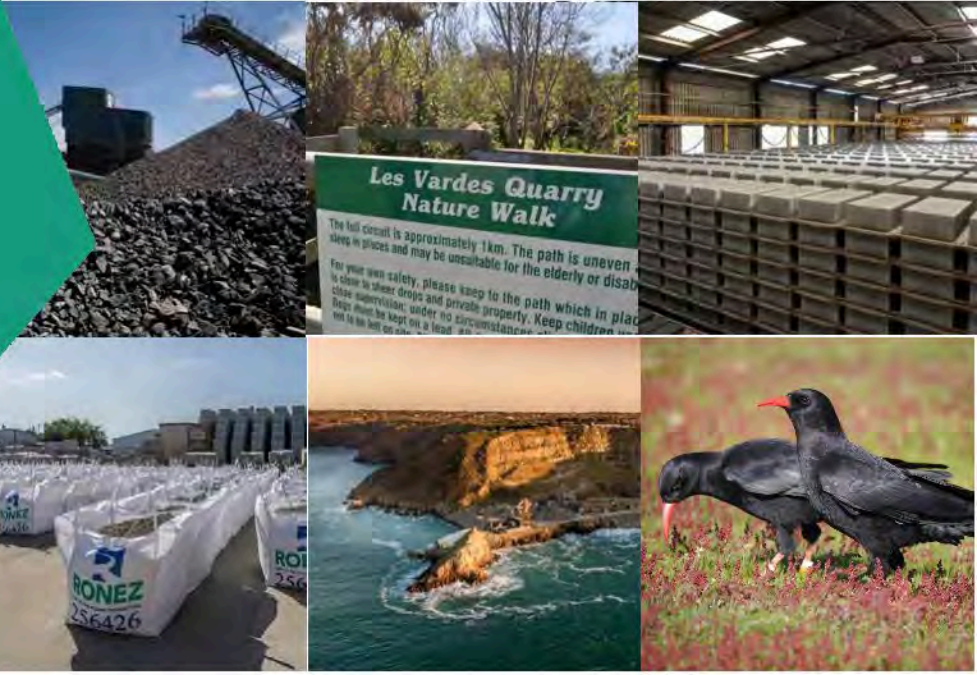


The information contained within this publication was accurate at time of production. However, Ronez Limited reserves the right to introduce modifications or changes to detail at any time without notice. No charge is levied for this publication or advice therein, and accordingly the company, its employees and authorised agents can accept no liability whatsoever, either indirectly or directly arising from the use of its products in connection with any information or advice contained in this guide.

A SigmaRoc PLC Company.



# Low-Carbon Block Product Information



A solid low-carbon concrete block for use in both internal and external construction.

- 🌱 Conforming to BS EN 771-3: 2011 and a standard strength requirement of 7.3N/mm<sup>2</sup>.
- 🌱 High density load bearing block suitable for solid, cavity, separating and partition walls.
- 🌱 A1 fire protection rating and excellent thermal and sound insulation.
- 🌱 Ronez Low-Carbon concrete blocks are a cost effective greener alternative, reducing resource depletion through substituting cement with an industrial by-product.\*



## Low-carbon block benefits

- 🌱 Ronez Low-Carbon (440 x 100 x 215mm) concrete blocks save up to 50kg CO<sub>2</sub>e per 100 blocks or 1.3 tonnes of CO<sub>2</sub>e per average house build.\*<sup>a</sup>



\* When compared to equivalent concrete blocks manufactured with 100% Ordinary Portland Cement.

\*<sup>a</sup> Data obtained and calculated using:  
<https://circularecology.com/concrete-embodied-carbon-footprint-calculator.html>, [www.self-build.co.uk](http://www.self-build.co.uk), <http://www.carbon-calculator.org.uk/>, and <https://www.ecocem.ie/calculator/#>

© 2023 Ronez Foundations. Ronez is a registered trademark of Ronez Foundations. Ronez is a registered trademark of Ronez Foundations. Ronez is a registered trademark of Ronez Foundations. Ronez is a registered trademark of Ronez Foundations.



# Product Information

## Guernsey concrete block product range

Size (mm)	440 x 215
Thickness (mm)	100, 140
Density (kg/m <sup>3</sup> )	2.2 (100) 2.2 (140)
Weight (kg)	21 (100) 30 (140)
Strength	7.3N/mm <sup>2</sup>
Blocks per M2 inc. mortar	9.88
Fire rating	A1
K value (W/mk)	1.42
RW value upright	49 db (100) 52 db (140)



## Jersey concrete block product range

Size (mm)	440 x 215
Thickness (mm)	100, 140
Density (kg/m <sup>3</sup> )	2.0 (100) 2.1(140)
Weight	19 (100) 28 (140)
Strength	7.3N/mm <sup>2</sup>
Blocks per M2 inc. mortar	9.88
Fire rating	A1
K value (W/mk)	1.3
RW value upright	48 db (100) 51 db (140)



### Ronez Limited

Les Vardes Quarry, St Sampson  
Guernsey GY2 4TF  
Tel: +44 (0)1481 256426

sales@ronez.com  
www.ronez.com

### Ronez Limited

Momains Yard, Vale  
Guernsey GY2 5TZ  
Sales: +44 (0)1481 201300  
Technical: +44 (0)1481 201312

### Ronez Limited

La Route du Nord, St John  
Jersey JE3 4AR  
Tel: +44 (0)1534 867212  
Technical: +44 (0)1534 867214



The information contained within this publication was accurate at time of production. However, Ronez Limited reserves the right to introduce modifications or changes to detail at any time without notice. No charge is levied for this publication or advice therein, and accordingly the company, its employees and authorised agents can accept no liability whatsoever, either indirectly or directly arising from the use of its products in connection with any information or advice contained in this guide.

A SigmaRoc PLC Company.



# Mega Blocks Product Information



Large concrete blocks that interlock to form solid and secure barriers and walls.

- Manufactured from recycled concrete
- Individual units interlock
- Lifting eyes built in

**Ideal for:**

- Retaining walls
- Temporary barriers
- Construction sites
- Storage areas

**Sizes**

Available in two sizes:

**Large** 670 x 700 x 1400mm

**Small** 670 x 700 x 660mm



# Mega Blocks

## Product Information

### Sustainability and local sourcing

**Recyclable:** 100% of the product can be recycled thus reducing the amount of material that is sent to landfill.

**Manufacturing location:** produced in the Channel Islands, with locally sourced materials under strict environmental and social legislation, for local supply.

### Installation standard

Install in accordance with the relevant section of BS 7533.

### Maintenance and cleaning

Ronez can supply on request advice on specific stain removal and general maintenance, suitable cleaning products and referrals to specialist cleaning companies.

### COSHH data

Full COSHH data on Ronez products is available on request.

### Technical support

Detailed guidance and assistance with the preparation of specification of Ronez hard landscaping products, including model clauses, is available through the sales office. A free technical design service is also available.

For further information, please refer to Ronez technical services on **Guernsey 01481 201312 or Jersey 01534 867214.**

\*Ratings based upon generic green guide values (2009) supplied by BRE Global Ltd, [www.thegreenguide.co.uk](http://www.thegreenguide.co.uk)

#### Ronez Limited

Les Vardes Quarry, St Sampson  
Guernsey GY2 4TF  
Tel: +44 (0)1481 256426

[sales@ronez.com](mailto:sales@ronez.com)

[www.ronez.com](http://www.ronez.com)

#### Ronez Limited

Momains Yard, Vale  
Guernsey GY2 5TZ  
Sales: +44 (0)1481 201300  
Technical: +44 (0)1481 201312

#### Ronez Limited

La Route du Nord, St John  
Jersey JE3 4AR  
Tel: +44 (0)1534 867212  
Technical: +44 (0)1534 867214



The information contained within this publication was accurate at time of production. However, Ronez Limited reserves the right to introduce modifications or changes to detail at any time without notice. No charge is levied for this publication or advice therein, and accordingly the company, its employees and authorised agents can accept no liability whatsoever, either indirectly or directly arising from the use of its products in connection with any information or advice contained in this guide.

A SigmaRoc PLC Company.



# Medium Density Block Product Information



A medium density solid concrete block for use in both internal and external construction.

- Available in solid format with a standard strength of 7.3N/mm<sup>2</sup>
- Ideal for constructing solid, cavity, separating and partition walls
- Good levels of strength, fire resistance and sound insulation
- Mid-weight is easier to handle and quicker to lay

Ronez is the leading supplier of concrete blocks in Jersey.

The Ronez concrete block range is manufactured in a wide range of sizes strengths and finishes offering total flexibility.

Ronez concrete blocks are extremely cost effective and use top quality aggregates from our quarry ensure the full specification requirements are met.



400 x 215 x 100mm (Available to order only)

440 x 215 x 140mm

# Medium density blocks

## Product Information

Ronez medium density blocks are produced with the addition of lightweight aggregates, in a size of 440 x 215 x 140mm, 100mm thickness are available to order only.

Traditionally considered for compliance with manual handling recommendations. Ronez medium density blockade suitable for all walling applications above and below DPC.

### Medium density blocks product range

Size (mm)	440 x 215
Thickness (mm)	140 (100 available to order)
Density (kg/m <sup>3</sup> )	1833
Weight (kg)	24
Strength	7.3N/mm <sup>2</sup>
Colour	Natural
Finish	Standard
K value (W/mk)	0 - 67
R value (M <sup>2</sup> K/W)	Standard

#### Ronez Limited

Les Vardes Quarry, St Sampson  
Guernsey GY2 4TF  
Tel: +44 (0)1481 256426

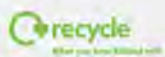
sales@ronez.com  
www.ronez.com

#### Ronez Limited

Momains Yard, Vale  
Guernsey GY2 5TZ  
Sales: +44 (0)1481 201300  
Technical: +44 (0)1481 201312

#### Ronez Limited

La Route du Nord, St John  
Jersey JE3 4AR  
Tel: +44 (0)1534 867212  
Technical: +44 (0)1534 867214



The information contained within this publication was accurate at time of production. However, Ronez Limited reserves the right to introduce modifications or changes to detail at any time without notice. No charge is levied for this publication or advice therein, and accordingly the company, its employees and authorised agents can accept no liability whatsoever, either indirectly or directly arising from the use of its products in connection with any information or advice contained in this guide.

A SigmaRoc PLC Company.



## 6mm Prodrive Asphalt

For a driveway that stays  
looking good for longer



Prodrive Asphalt



Asphalt showing  
scuffing

Prodrive has been specifically designed for domestic drives to give an aesthetically pleasing finish whilst being tough enough to cope with the demands of wear and tear from shear forces exerted by the turning wheels of vehicles.

- Highly resistant to scuffing and power steering from tight turning vehicles
- Tough and durable
- Available in black only
- Cellulose fibres strengthen and bind product

### Pallot Tarmac

La Route du Nord, St John, Jersey, JE3 4AR

For more information on Prodrive or for a quote to renew your driveway please call us on 01534 861838 or email [pallottarmacsales@ronez.com](mailto:pallottarmacsales@ronez.com)



[www.ronez.com](http://www.ronez.com)





## Asphalt Care

New asphalt surfaces - domestic and light use



### What is asphalt?

Asphalt is a generic term for all types of coated material, including Macadams, Hot Rolled Asphalt, Stone Mastic Asphalt, and Proprietary Surfacing. They are manufactured using temperature sensitive bitumen as the binding agent. The materials containing hard or modified bitumen are manufactured at a temperature as high as 190°C (374°F). This temperature enables the aggregate to be thoroughly coated in bitumen allowing the material to be spread and properly compacted on site. The bitumen serves two purposes in the asphalt: Firstly it acts as a lubricating agent to assist compaction when the material is hot; and secondly when cold, it binds and holds the aggregate particles together. The stiffer or harder the bitumen used, the better the ultimate performance of the mixture, however it is more difficult to lay in adverse weather conditions.

### Normal appearance

When asphalt is first laid the surface will have a shiny black appearance. After some weeks, and depending on use, the glossiness will reduce as the surface weathers. Within 6 months to a year the colour will lighten to a dark grey as the binder at the surface, when exposed to the sunlight, oxidises and wears. On roads this is a desirable effect as the rougher texture of the aggregate is exposed by the binder being worn away by vehicle tyres, leading to improved resistance to skidding at the surface. This wearing/weathering effect

will also be noticeable in other applications where areas are subject to regular traffic movement, for example the wheel-tracks leading to a garage, or within a regularly used turning area. The eventual colour of the surface will be significantly affected by the colour of the aggregate used in the manufacture of the material. The majority of aggregates range in colour from light to very dark grey, with others being dark green/grey, pink or even brown. For coloured asphalts the aggregate will be selected to be sympathetic to the desired colour of the material.





# Asphalt Care

## New asphalt surfaces - domestic and light use



The second type of damage may result from the scrubbing action of vehicle tyres. The risk of damage from tyres is greatest when using power steering in combination with either attempting to steer a stationary vehicle, or manoeuvring in a restricted area at very slow speed.

Where surface scouring has occurred, the area should be immediately trodden in to reconsolidate the loose aggregate particles that have been disrupted. However this may only be effective if the surfacing is relatively new, and the compression of the surface is carried out immediately the damage has occurred and when the surface is warm to the touch.

### Contamination

The majority of asphalts, when contaminated with oil or oil derivatives, will be subject to softening. The extent of the softening and the damage to the surfacing will be dependent on a number of factors including: the type of asphalt used in the surfacing, quantity of contaminant, and more importantly the length of time the contaminant has been in contact with the bitumen.

The principle contaminants that can soften the surfacing are: Petrol, lubricating oil, gas/diesel oil, paraffin, creosote, oil based paints, turpentine and some other proprietary cleaning agents/solvents. If a spillage occurs, immediately soak up the liquid with sawdust, dry sand or absorbent paper, and remove the saturated absorbent from the surface and discard in an appropriate and safe manner. Accumulated oil droppings from a car can create soft spots in the asphalt, which if not treated, will result in the asphalt structure eventually breaking down. Brushing the area with a soft broom using a soap solution or a proprietary nonsolvent based cleaning agent will remove some of the oil from the surface, however the staining will remain.

Another type of contamination that can ruin the appearance of the surface occurs when aggregates and particularly concrete or building mortar have been in contact the surfacing. In the case of concrete or mortar, the surface should be jetted with water to flush the cement paste from the surface voids before it begins to set. In hot weather this may be only 3 hours from when the cement was mixed with water. Even after rigorous washing, a light grey area may re-appear after the surface dries due to small quantities of mortar being retained in the surface voids.

### Weeds

At the edges of the surfacing, and particularly in close proximity to lawns and flower beds, weeds may grow in the dirt accumulated at the surface or push their way through from underneath. If the roots do not penetrate the surfacing, the weeds should be carefully removed and discarded. However if the roots have penetrated the surface, or the weeds are coming up from underneath, a proprietary water based total weedkiller should be used. When the weeds have died off remove the foliage, and when the surface is warm, reconsolidate the raised patch of asphalt through foot pressure. Only remove the roots if they can be extracted without disturbing the surfacing.

### After Care

As in all situations prevention is better than the cure. Treat all asphalt surfaces with respect, particularly when they are new and the surface is warm.

Be aware of the damage that may be caused to the surface and take the appropriate preventive measures.

### The most frequent causes of damage to newly laid surfaces are:

- 1 Tyre damage from stationary or slow moving vehicles. When pulling away, apply the steering when the vehicle is moving and not when stationary. Take care when making slow tight turns.
- 2 Point loading from heavy objects. Protect the surface with boards when ladders, skips, jacks, motor cycle or caravan props or other standing loads are in contact with the surface.
- 3 Soiling from other construction materials. Place aggregates, concrete and any other dirty/heavy items on boarding and/or impermeable sheeting to protect the surface.
- 4 Contamination by lubricating or fuel oils.

Due to the dark black colouration and shiny appearance of a newly laid surface, oil contamination may not be so immediately noticeable and if left untreated will damage the surface. If carrying out vehicle maintenance ensure the

surface is protected using boards and impermeable sheeting removing any spillages as described under the section titled Contamination.

Remember footpaths, house drives and domestic car parking areas have usually been designed to take the weight of cars and may suffer from structural as well as surface damage if trafficked by heavy vehicles.

In extremely hot sunny weather, surface temperatures of newly laid material can readily exceed 50 °C (122 °F), and particular care is required to reduce the risk of surface marking and damage.

If surfaces become sticky and soften, dousing with cold water or the use of boarding will reduce the risk of damage from standing loads or the scrubbing action of tyres.

### The contractor

As with any project involving construction materials, expertise is required to ensure the final surfacing is durable, looks good and performs well under use. It is therefore essential that asphalt mixtures are laid by professionals using appropriate equipment that is designed for the job. For large areas a paving machine will be used, however for the smaller areas, asphalt can be successfully laid by hand. In both cases the key to performance is for the contractor to use an appropriately heavy roller on both the underlayer and the laid asphalt and to achieve full compaction before the asphalt cools and becomes unworkable. It is therefore recommended that a suitable contractor should be selected on the basis of either proven success on previous contracts and/or that the contractor is well known and possibly the contracting arm of a major asphalt/aggregates supply company.

### Pallot Tarmac

La Route du Nord, St John, Jersey, JE3 4AR  
Tel: 01534 861838  
Email: [pallottarmacsales@ronez.com](mailto:pallottarmacsales@ronez.com)  
[www.ronez.com](http://www.ronez.com)





# Ronez QD Screed Product Information



Ronez Quick Drying (QD) Screed is a new generation screed based on powder super-plasticisers, polymers and speciality quick drying accelerators.

Ronez QD offers screed applicators, contractors, builders and developers significant savings in time and cost.

Ronez QD uses a new generation of powdered admixtures which, when combined together, achieve remarkable performance improvements. Screed which utilise this admixture will benefit from significantly faster drying and hardening which means floor access times are dramatically reduced.

## The Ronez QD screed comprises:

- Easy to use sachet dosing
- Accurate and consistent measuring
- Fast drying for quick access to new screed floors
- Can be used with "screed pumps"
- Can be dosed and mixed at the plant or on site

## Screed Product Range

Ronez 3:1 - QD Screed

Ronez 3:1 - QD Screed, Extend

Ronez 4:1 - QD Screed

Ronez 4:1 - QD Screed with Fibres

Ronez 4:1 - QD Screed, Fibres & Extend

Ronez QD Screed & Extend



# Ronez QD Screed Product Information

## Curing

Ronez QD screed has similar movement characteristics to traditional screeds. The moisture content should be checked before commencing to lay the floor covering to ensure compliance with the recommendations of BS 8203. Typically, floor coverings can be installed between one to three weeks after laying depending on the screed thickness and surrounding conditions.

The Ronez QD screed will, under normal conditions, resist wear and tear from light foot traffic. However, where follow-on trades are to work on an uncovered new screed, it is recommended that the screed is protected until the floor covering is applied.

## COSHH data

Full COSHH data on Ronez concrete products is available on request. Please call our technical department.

### Ronez Limited

Les Vardes Quarry, St Sampson  
Guemsey GY2 4TF  
Tel: +44 (0)1481 256426

sales@ronez.com  
www.ronez.com

### Ronez Limited

Momains Yard, Vale  
Guemsey GY2 5TZ  
Sales: +44 (0)1481 201300  
Technical: +44 (0)1481 201312

### Ronez Limited

La Route du Nord, St John  
Jersey JE3 4AR  
Tel: +44 (0)1534 867212  
Technical: +44 (0)1534 867214



The information contained within this publication was accurate at time of production. However, Ronez Limited reserves the right to introduce modifications or changes to detail at any time without notice. No charge is levied for this publication or advice therein, and accordingly the company, its employees and authorised agents can accept no liability whatsoever, either indirectly or directly arising from the use of its products in connection with any information or advice contained in this guide.

A SigmaRoc PLC Company.

# Slabcrete Product Information



Designed by Ronez, Slabcrete is a range of fibre reinforced grade concretes that reduce the errors associated with the use of conventional reinforcing methods.

Slabcrete provides contractors and specifiers with a high performance, secure fast track solution to many of the more challenging aspects of construction.

Slabcrete utilises carefully selected frost resistant aggregates and a range of metal or polymer reinforcing fibres together with cements selected for the particular application. Slabcrete is distinguished by a number of enhanced and special technical properties.

#### Slabcrete when correctly specified will deliver:

- Unparalleled ease of construction
- Enhanced toughness making it suitable for areas subjected to high impacts

- Placing Slabcrete is as easy as conventional concrete, is available in strengths up to 50N/mm<sup>2</sup> and may be supplied containing a pigment
- High volume stability reduced shrinkage
- Superior toughness when subjected to mechanical forces and plant
- Possible reductions in section, subject to design when compared to traditional concrete
- Certainty of reinforcement location
- Possible savings over conventional steel mesh reinforcement
- Reduction in joints through larger panel construction
- Slabcrete can be tailored to the particular challenges of your contract

#### Applications

Slabcrete can be utilised in all forms of slab construction for residential, transport infrastructure, office and administrative buildings as well as hotels, schools and hospitals.



# Slabcrete Product Information

## Manufacturing standard

Slabcrete conforms with the requirement of European standard BS EN 206 Specification, performance, production and conformity and with the requirements of BS8500-1 and BS 8500-2.

Slabcrete is manufactured under independently monitored third party quality assurance schemes in accordance with ISO 9001 and with factory environmental compliance to ISO 14001.

## Typical performance and technical data

Available in strength classes from: C30 to C50

Flexural strength from: 5 N/mm<sup>2</sup>

## Installation standard

The Slabcrete range is intended to be placed by conventional skip, pump or direct placement methods.

Available in consistence classes up to S4.

Full compaction will be achieved by the correct application of standard equipment, using other methods may not allow the products to achieve their full potential.

## Curing

As with any concrete it is essential to cure Slabcrete correctly, any failure to do so will result in some loss of performance.

Whilst Slabcrete exhibits a superior resistance to the drying effects of wind and sun, conventional good practice should be followed in the prevention of plastic shrinkage cracking.

Immediately the finishing operation is complete final curing should commence and may be accomplished by the use of any recognised high efficiency curing membrane.

Except in cases where rapid access is required curing should continue for at least 7 days.

## Key aggregate and recycled content

This product may be formulated to be substantially better for the environment than the equivalent traditional concrete. Ronez is unique in being able to quantify this difference.

The raw materials used in the manufacture of the binders are obtained from processes where they form from a co-product.

## COSHH data

Full COSHH data on Ronez concrete products is available on request.

### Ronez Limited

Les Vardes Quarry, St Sampson  
Guernsey GY2 4TF  
Tel: +44 (0)1481 256426

sales@ronez.com

www.ronez.com

### Ronez Limited

Momains Yard, Vale  
Guernsey GY2 5TZ  
Sales: +44 (0)1481 201300  
Technical: +44 (0)1481 201312

### Ronez Limited

La Route du Nord, St John  
Jersey JE3 4AR  
Tel: +44 (0)1534 867212  
Technical: +44 (0)1534 867214



The information contained within this publication was accurate at time of production. However, Ronez Limited reserves the right to introduce modifications or changes to detail at any time without notice. No charge is levied for this publication or advice therein, and accordingly the company, its employees and authorised agents can accept no liability whatsoever, either indirectly or directly arising from the use of its products in connection with any information or advice contained in this guide.

A SigmaRoc PLC Company.

# Standard Block Product Information



## A solid concrete block for use in both internal and external construction.

- Available in solid format with a standard strength of 7.3, 10.4 & 22.5 N/mm<sup>2</sup>
- Ideal for constructing solid, cavity, separating and partition walls.
- Good levels of strength, fire resistance, thermal insulation properties and sound insulation.

Ronez is the leading manufacturer of concrete blocks in the Channel Islands. They are produced to BS EN 771-3.

The Ronez concrete block range is manufactured in a wide range of sizes, strengths and finishes offering total flexibility.

Ronez concrete blocks are extremely cost effective and use top quality aggregates from our quarries which ensure that the full specification requirements are met.





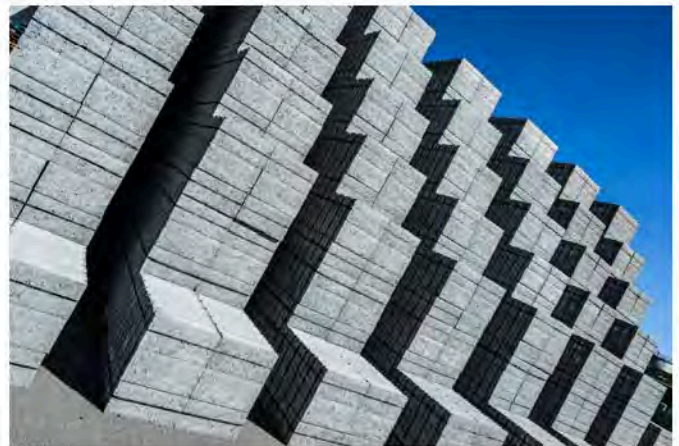
# Product Information

## Guernsey concrete block product range

Size (mm)	440 x 215
Thickness (mm)	100, 140
Density (kg/m <sup>2</sup> )	2.2 (100) 2.2 (140)
Weight (kg)	21 (100) 30 (140)
Strength	7.3, 10.4 & 22.5 N/mm <sup>2</sup>
Blocks per M2 inc. mortar	9.88
Fire rating	A1
K value (W/mk)	1.42
RW value upright	49 db (100) 52 db (140)

## Jersey concrete block product range

Size (mm)	440 x 215
Thickness (mm)	100, 140
Density (kg/m <sup>2</sup> )	2.0 (100) 2.1 (140)
Weight	19 (100) 28 (140)
Strength	7.3, 10.4 & 22.5 N/mm <sup>2</sup>
Blocks per M2 inc. mortar	9.88
Fire rating	A1
K value (W/mk)	1.3
RW value upright	48 db (100) 51 db (140)



### Ronez Limited

Les Vardes Quarry, St Sampson  
Guernsey GY2 4TF  
Tel: +44 (0)1481 256426

sales@ronez.com  
www.ronez.com

### Ronez Limited

Momains Yard, Vale  
Guernsey GY2 5TZ  
Sales: +44 (0)1481 201300  
Technical: +44 (0)1481 201312

### Ronez Limited

La Route du Nord, St John  
Jersey JE3 4AR  
Tel: +44 (0)1534 867212  
Technical: +44 (0)1534 867214



The information contained within this publication was accurate at time of production. However, Ronez Limited reserves the right to introduce modifications or changes to detail at any time without notice. No charge is levied for this publication or advice therein, and accordingly the company, its employees and authorised agents can accept no liability whatsoever, either indirectly or directly arising from the use of its products in connection with any information or advice contained in this guide.

A SigmaRoc PLC Company.



# Ronez Watertight Product Information



## Ronez Watertight is a versatile range of specialised concretes designed to protect a structure from water ingress or to retain water within a structure.

When compared to traditional methods of achieving watertight structures, Ronez Watertight offers contractors and specifiers the competitive edge in both cost and time savings.

Ronez Watertight provides a fast track solution over traditional methods of construction such as external membranes or cavity drainage.

Designed by Ronez, the Ronez Watertight range encompasses the full scope of admixture driven solutions and upon request can be supplied with a manufacturers warranty giving you the confidence to specify and use a unique product.

- Is fully compliant with BS 8102 type B construction
- Reduces installation time
- Available as a pumpable or flowing mix in slump and flow grades
- Reduces installation cost.

## Applications

Ronez Watertight is available in concrete grades suitable for applications ranging from service reservoirs, water treatment structures, car parks, domestic basements and swimming pools. Ronez will tailor Ronez Watertight to the particular challenges of your contract and provide detailed advice and support during the initial use of the product.

## Manufacturing Standard

Ronez Watertight conforms with the requirement of European standard BS EN 206 and with the requirements of BS8500-1; BS 8500-2 2006 and BS 8102.

Ronez Watertight is manufactured under independently monitored third party quality assurance schemes in accordance with ISO 9001 and with factory environmental compliance to ISO 14001.

## Typical performance and technical data

Available in strength classes from: C30 to C50

Flexural strength from: 5 N/mm<sup>2</sup>



# Ronez Watertight Product Information

## Installation standard

The Ronez Watertight range is intended to be placed by conventional skip, pump or direct placement methods. Available in consistence classes S3 - S4.

Full compaction will be achieved by the correct application of standard vibrating equipment, using other methods may not allow the products to achieve their full potential and should be evaluated with our assistance before use.

## Curing

As with any structural concrete it is essential to cure Ronez Watertight correctly, any failure to do so will result in some loss of performance and may invalidate any warranty offered.

Whilst Ronez Watertight exhibits a superior resistance to the drying effects of wind and sun conventional good practice should be followed in the prevention of plastic shrinkage cracking. Immediately the finishing operation is complete, final curing should commence and may be accomplished by the use of any recognised high efficiency curing membrane or method.

Curing should continue for the period specified.

## Key aggregate and recycled content

This product may be formulated to be substantially better for the environment than the equivalent traditional concrete.

Ronez is unique in being able to quantify this difference. Wherever available, a recycled or secondary aggregate may be selected to achieve a reduced environmental impact and increased green guide rating.

The raw materials used in the manufacture of the binders are obtained from processes where they form from a co-product.

## COSHH data

Full COSHH data on Ronez concrete products is available on request.

### Ronez Limited

Les Vardes Quarry, St Sampson  
Guernsey GY2 4TF  
Tel: +44 (0)1481 256426

[sales@ronez.com](mailto:sales@ronez.com)

[www.ronez.com](http://www.ronez.com)

### Ronez Limited

Momains Yard, Vale  
Guernsey GY2 5TZ  
Sales: +44 (0)1481 201300  
Technical: +44 (0)1481 201312

### Ronez Limited

La Route du Nord, St John  
Jersey JE3 4AR  
Tel: +44 (0)1534 867212  
Technical: +44 (0)1534 867214

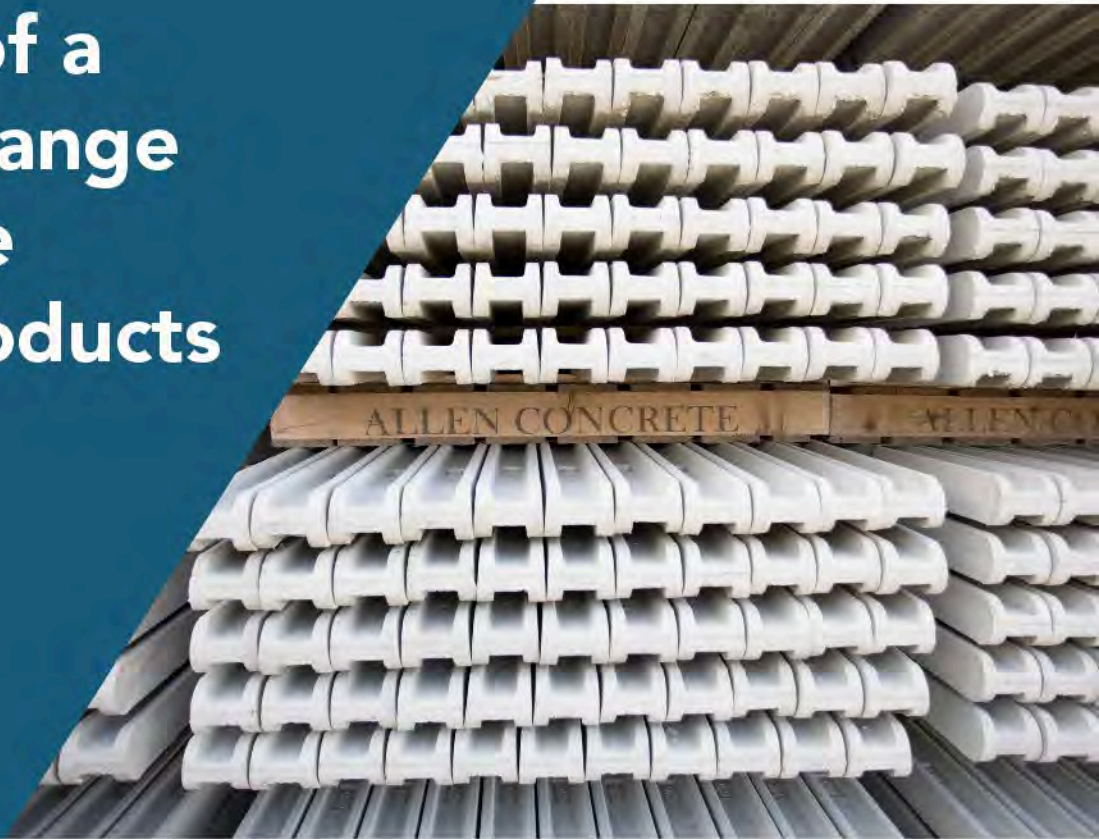


The information contained within this publication was accurate at time of production. However, Ronez Limited reserves the right to introduce modifications or changes to detail at any time without notice. No charge is levied for this publication or advice therein, and accordingly the company, its employees and authorised agents can accept no liability whatsoever, either indirectly or directly arising from the use of its products in connection with any information or advice contained in this guide.

A SigmaRoc PLC Company.



# Suppliers of a complete range of concrete fencing products



## Allen Concrete. Suppliers of a complete range of concrete fencing products

Allen Concrete manufactures wet cast concrete fencing and building products and delivers them to a wide range of clients throughout the UK.

<https://allenconcrete.co.uk/>





# Allen Concrete.

## Suppliers of a complete range of concrete fencing products

### Fencing

Wet cast, our posts have a smooth finish and are available in all standard sizes. All our precast concrete units are manufactured to BS 1722 and BS EN 12839 standards. Large stocks and regular deliveries ensure the fast and efficient despatch of products throughout the UK.

Our fencing range includes slotted posts, gravel boards, spurs, closeboard fence posts and concrete posts and panels

### Building

As well as fencing units, we offer a standard range of precast building products. These include bollards, concrete path edging, pier caps, road kerbs, window sills, copings, lintels, padstones and paving slabs.

### Ornamental

Our ornamental range includes combined spheres and bases, coping, pier caps and spheres and ornamental window sills.

### Bespoke

With a drawing office and well-equipped mould manufacturing facilities, we are well placed to undertake the production of a range of bespoke structural and non-structural precast concrete products made to customer specification in large or small quantities.

Allen Concrete has many years' experience as a supplier to Ministry contracts and to county and local authorities, public utilities and rail networks.



### Contact Us

[sales@allenconcrete.co.uk](mailto:sales@allenconcrete.co.uk)

### Surrey

35 Willow Lane  
Mitcham  
Surrey  
CR4 4UH

020 8687 2222

### Northants

35 - 37 Rixon Road  
Wellingborough  
Northants  
NN8 4BA

01933 276848

**Allen  
Concrete**  
A PPG COMPANY

**Sigma  
Roc**



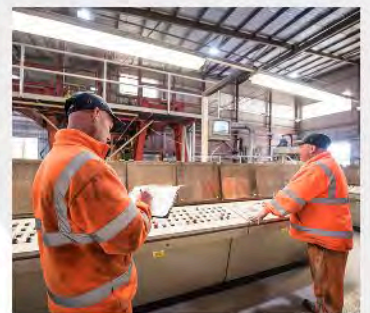
# Suppliers of concrete blocks and aggregates



## CCP. Suppliers of concrete blocks and aggregates.

CCP is a manufacturer and trade supplier of concrete products based in the North West of England, We also produce Aggregate from our quarry situated in North Wales.

<https://ccp.ltd/>





# CCP. Suppliers of concrete blocks and aggregates.

## CONCRETE BLOCKS

We offer a comprehensive selection of concrete building blocks which are available in a range of sizes, strengths and densities, making them ideal for use in any situation – both internally and externally. With an annual production of over 1.8 million our blocks are manufactured in accordance with the British Standard and offer excellent thermal conductivity and sound-reducing qualities.

Our concrete block range includes:

### Greenbloc

The UK's first cement-free ultra-low carbon dense concrete block. Powered by Cemfree, an ultra-low carbon alternative to traditional cement, Greenblocs are suitable for foundations, load bearing walls, internal leaves of cavity walls and partition walls. Up to 77% lower eCO2 compared to a dense concrete block manufactured with 100% Ordinary Portland Cement.

### Foundation Blocks

### Consolite

Hollow Dense, Cellular Dense, Solid Dense Blocks and Easy-lay

### Modulite

Cellular Dense, Medium Dense and Medium Dense Lightweight Paint grade blocks

### Concrete Commons

Concrete Commons are designed to be used in many applications including making up courses in blockwork, as padstones on top of hollow blocks, as reveals, jambs and window heads and as kicker units to bring blockwork to wall height.

### Lightweight Coursing Brick

CCP lightweight coursing bricks are designed to be used in all types of construction in conjunction with lightweight aggregate blocks.

### Aggregates

Our premium product is suitable for a range of uses in the construction industry. Extracted from our quarry in Aberdo, Flintshire we supply limestone aggregates to projects in North Wales, Cheshire, Merseyside and Shropshire. We are also able to supply materials including Bulk Cement nationally through our trading division. Our aggregates include Sand and Gravel, Decorative Aggregates, High PSV, Recycled Aggregates, White Limestone, Top soil, Muck away



#### Contact Us

ccp@ccp.ltd  
01978 799070  
<https://ccp.ltd/>

#### Llay Facility

Llay Rd  
Llay  
Wrexham  
LL12 0TL

#### Middlewich Facility

Road Beta  
Middlewich  
Cheshire  
CW10 0QF

#### Aberdo Quarry

Pentre Halkyn  
Holywell  
Flintshire  
CH8 8HP





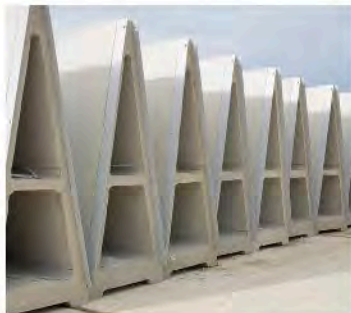
# Poundfield Precast. Innovation in Concrete.



## Poundfield Precast. Innovation in Concrete.

Poundfield Precast are manufacturers of retaining walls, beam & block flooring and bespoke precast concrete.

<https://poundfield.com/>





# Poundfield Precast. Innovation in Concrete.

## Retaining Walls

Specialists in the retaining wall market, we currently produce seven retaining wall product ranges to offer rapid, efficient walling solutions across a wide range of different industries. These include the unique Alfabloc®, the only 'A' shape, interconnecting freestanding precast concrete wall system on the market, L-Bloc, Taperbloc, Betaloc (interlocking blocks), Shuttabloc, Alfastop and prestressed panels.

## Beam and Block Flooring

Poundfield Precast is the premium choice supplier of beam & block flooring to both the residential and commercial building markets, providing a comprehensive flooring quotation package, flexible cutting schedules and ongoing support.

Our flooring systems carry the CE Mark Accreditation British Standard EN 15037-1:2008 and are manufactured to meet with current construction and installation best practices

## Bespoke Precast Concrete

While our standard range of precast concrete products solve everyday problems, many construction projects require bespoke units to fulfil a very specific task. From one off units to multiple pieces, our bespoke precast concrete division provides solutions for a wide range of clients and projects.

Our dedicated design and manufacturing teams are able to work from technical drawings, or create solutions from scratch, in partnership with our customers own designers or technical specifications. With mould manufacturing facilities on-site, we can create unique pieces of any shape and with specialist finishes that can be applied during the casting stage.

We work with a wide range of blue-chip clients and projects, ranging from coastal and river defence work, civils, multi-storey car parks, railways through to major infrastructure projects for the likes of the Highways Agency, Network Rail and Tideway, to name but a few.



### Contact Us

enquiries@poundfield.com  
01449 723150

### Poundfield Products Ltd

The Grove  
Creting St Peter  
Ipswich  
Suffolk  
IP6 8QG



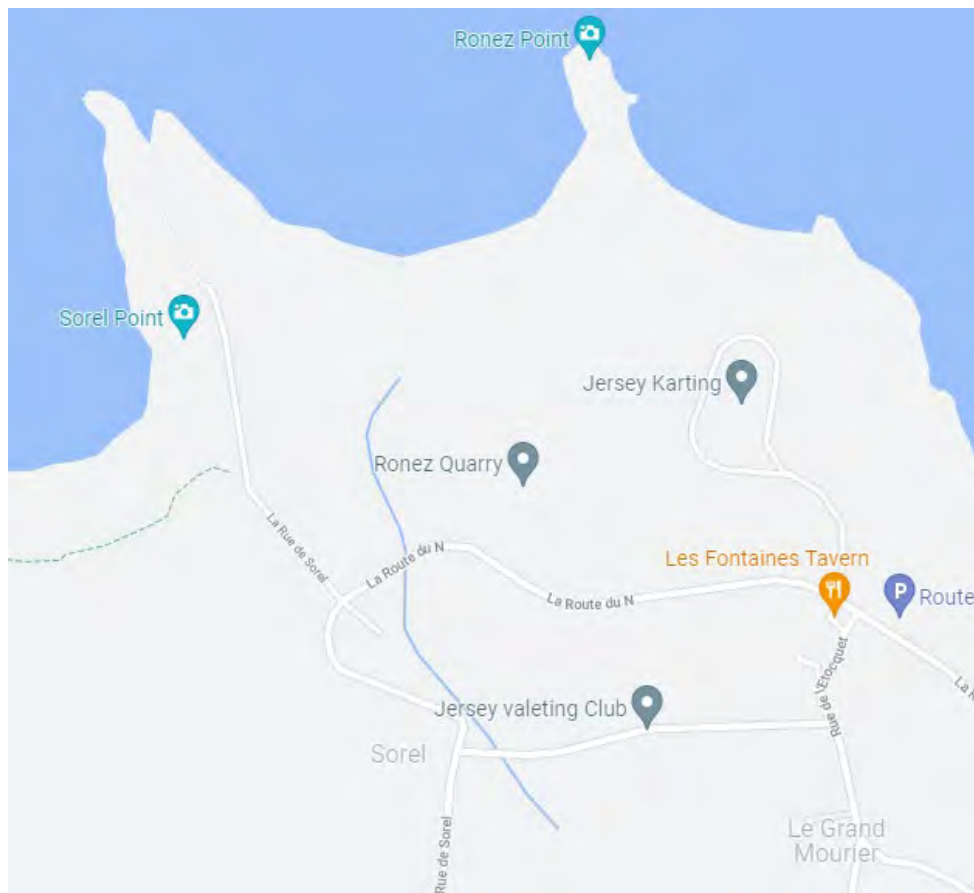




CARRIERES DU HAINAUT



# Contact Us



## Useful Numbers:

Switchboard – 01534 867200

Weighbridge – 01534 867222

Premix – 01534 867215

Technical – 01534 867214

Sales – 01534 867212 /  
07829 925625

Pallot Tarmac – 01534 861838

### Ronez Limited

Les Vardes Quarry, St Sampson  
Guernsey GY24TF  
Tel: +44 (0)1481 256426

[sales@ronez.com](mailto:sales@ronez.com)

[www.ronez.com](http://www.ronez.com)

### Ronez Limited

Momains Yard, Vale  
Guernsey GY2 5TZ  
Sales: +44 (0)1481 201300  
Technical: +44 (0)1481 201312

### Ronez Limited

La Route du Nord, St John  
Jersey JE34AR  
Tel: +44 (0)1534 867212  
Technical: +44 (0)1534 867214



The information contained within this publication was accurate at time of production. However, Ronez Limited reserves the right to introduce modifications or changes to detail at any time without notice. No charge is levied for this publication or advice therein, and accordingly the company, its employees and authorised agents can accept no liability whatsoever, either indirectly or directly arising from the use of its products in connection with any information or advice contained in this guide.

A SigmaRoc PLC Company.